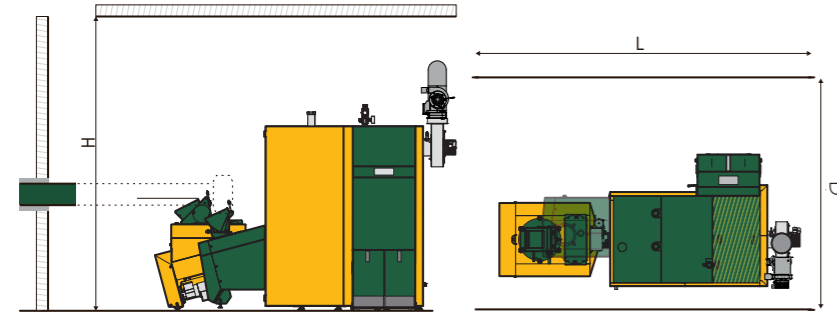


Space requirement in the heating room

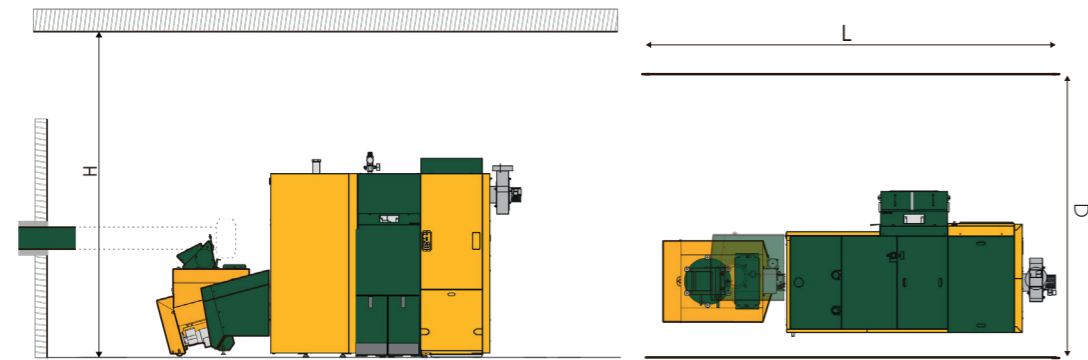
KWB Multifire



Installation dimensions - KWB Multifire	20 - 50 kW	60 - 80 kW	100 - 120 kW
Min. room height (H)	198	200	206
Min. room length (L)	254	275	287
Min. room depth (D)	163	173	173

Dimensions in cm

KWB Multifire with dust filter



Installation dimensions - KWB Multifire with dust filter	20 - 50 kW	60 - 80 kW	100 - 120 kW
Min. room height (H)	198	200	206
Min. room length (L)	295	331	342
Min. room depth (D)	171	182	182

Dimensions in cm

Video:
This is how the
KWB Multifire works



Website:
Learn more



Technical data (wood chip operation)

MF2 D/ZI MF2 E D/ZI	Unit	20	30 ¹	30 ²	40	45 ¹	50 ¹	60 ¹	65 ¹	70 ¹	80	100 ²	108 ¹	120
Rated power	kW	20	30	33	40	45	50	60	65	70	80	99/100/101	108	120
Partial load	kW	6,0	9,0	9,8	12,0	13,5	14,9	18,0	19,5	20,9	24,0	30,0	32,4	36,0
Boiler efficiency at rated power	%	94,8	95,1	95,2	95,4	95,3	95,3	95,2	95,1	95,0	94,9	95,3	95,5	95,7
Boiler efficiency at partial load	%	92,4	93,5	93,8	94,6	94,6	94,5	94,5	94,4	94,4	94,3	95,0	95,2	95,6
EU energy label	-	A+												
Exhaust gas side (for chimney calculation)														
Exhaust gas connection: Height	mm	>1395	>1395	>1395	>1395	>1395	>1395	>1445	>1445	>1445	>1445	>1445	>1445	>1445
Exhaust gas connection: Diameter	mm	150	150	150	150	150	150	180	180	180	180	200	200	200
Chimney diameter (approx. values)	mm	180	180	180	180	180	180	200	200	200	200	220	220	220
Electrical system														
Connection: CEE 5-pin 400 V _{AC}	-	50 Hz 13 A												
Connected load MF2 D: P16S/P31S incl. conveyor system	W	1769	1769	1769	1769	1769	1769	1827	1827	1827	1827	1827	1827	1827
Connected load MF2 ZI incl. conveyor system	W	1655	1655	1655	1655	1655	1655	1713	1713	1713	1713	1713	1713	1713


¹Drawing inspection ²Typification variant



KWB Multifire

- Flexible fuel selection thanks to the unique KWB crawler burner
- Particularly clean combustion and efficient to operate
- More convenient due to a divided ash box




KWB's modular and
easily transportable system

Pellet/wood chip heating
20 - 120 kW

CLEAN
EFFICIENCY **2.0**

Detailed overview of KWB Multifire pellet/wood chip heating system

No cleaning expenditures

Thanks to a fully self-cleaning system during ongoing operation.

Low emissions

Thanks to optimum exhaust gas routing and high combustion temperatures in a flow-optimised silicon carbide combustion chamber.

Safe operation

Thanks to sturdy one-chamber cell wheel sluice with deep filling chamber. It is designed to be a backfire protector and conveys and doses fuel while maximising the operational safety of the system. While the cellular wheel sluice for standard wood chips type P16S has a drop height of 16 cm, the optional cellular wheel sluice for coarse wood chips type P31S has a drop height of 25 cm (available for 60 – 120 kW).

Easy installation

Thanks to the integrated return flow temperature boost - optimised hydraulics fully adjusted to the system.

Easy & flexible operation

The KWB Comfort 4 control system enables operation via a colour touchscreen display or alternatively via a dial, while the display ensures maximum convenience by showing the fill level of the storage tank and a reminder to empty the ash box. The KWB ComfortOnline platform also lets you control the boiler remotely.

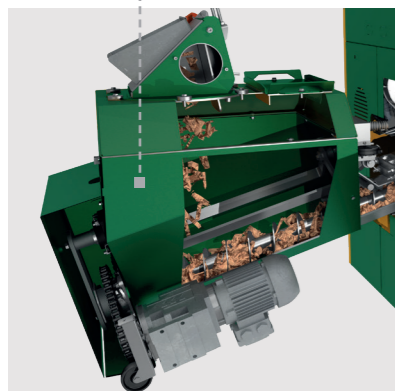
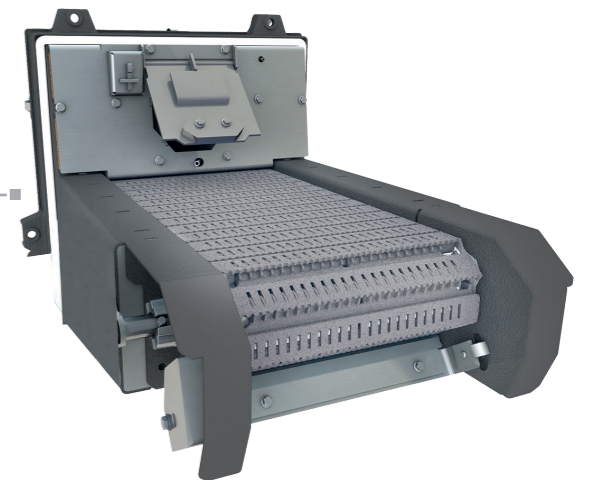
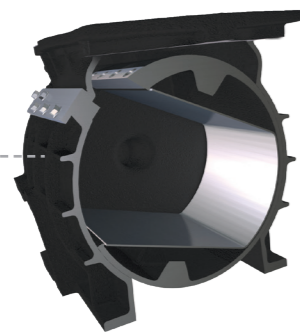
Easy ash removal

Into an ash container with integrated fill level monitoring - in a convenient 2-part design. Each ash container can hold a volume of 32 l. Optional 120 l or 240 l ash container also available.

Fuel recognition plus

The optional fuel recognition plus enables optimum operation even if the quality of the fuel fluctuates and continuously guarantees a perfect firebed on the KWB crawler burner.

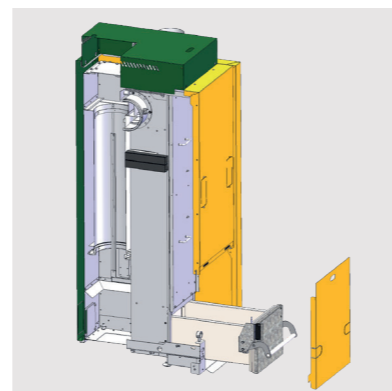
Combination with optional hopper possible



Hopper (optional)

The KWB Multifire can optionally be equipped with a 175 l large hopper that is automatically filled with wood chips from the storage room. This means that the conveyor system has to start less frequently thus minimising the amount of noise and power consumption. If required, the hopper can be filled manually. Including hopper: **10 years full warranty*** on the conveyor system!

* up to 50 kW boiler output and max. 15,000 operating hours



KWB dust filter (optional)

The KWB dust filter is optionally available and functions according to the principle of electrostatic particle separation thus separating out the fine dust. The separated fine dust is collected in a generously dimensioned ash pan which is comfortably and cleanly operated from the front. With the addition of the optional bypass shutter, the cleaning takes place non-stop without interrupting the boiler operation.

KWB crawler burner

The heart of the boiler is made of high-alloy cast and self-cleaning revolving grate components. Due to its continuous operation, **the robust grate fully automatically adjusts to the quality and characteristics of the fuel** and ensures continuous ash removal making 24/7 operation possible. The combustion process is highly efficient and as clean as possible meaning that no unburned residues remain in the ash.

Scan QR code to and learn more about the KWB crawler burner:

